

## DISTRICT 3



One Pearl Bank



### ADDITIONAL DISCOUNT

**2 Bedroom**

**Save Up To \$108K**

**3 Bedroom**

**Save Up To \$158K**

Promotion Valid till 31st May 2021

## RIVIÈRE



1Br | 560sf

Now From : \$1,480,900

**Save: \$171,100**

2Br | 818sf

Now From : \$2,127,670

**Save: \$339,330**

3Br | 1173sf

Now From : \$2,706,420

**Save: \$339,580**

3Br (Pte Lift) | 1711sf

Now From : \$4,057,200

**Save: \$650,800**

4Br (Pte Lift) | 2002sf

Now From : \$5,181,280

**Save: \$330,720**

For limited Period Only.

## DISTRICT 4

## REFLECTIONS

at Keppel Bay



### Special Promotion for Villa Penthouses

- Up to 12% Stamp Duty Reimbursement

For limited Period only.

## Corals

at Keppel Bay



### Special Promotion for 1 & 2 bedroom

- Rental Guarantee Scheme
- Enhanced Stay and Pay Scheme with 8% Furnishing Rebate



**BEN HE 何益龍**  
CEA REG NO. : R0486481  
**8666 3339**  
Singapore Accredited Mortgage Planner (SAMP™)

For selected stacks & limited Period Only.

## DISTRICT 5

### PARC CLEMATIS



#### Promotion

#### 4 Bedroom

**\$30,000 Discount**

#### 5 Bedroom

**\$40,000 Discount**

#### 3BR PTE LIFT & 3DK

**\$30,000 Discount**

#### 4BR PTE LIFT

**\$40,000 Discount**

#### 5BR PTE LIFT

**\$60,000 Discount**

#### Penthouse

**\$60,000 Discount**

For Limited Period only.

## DISTRICT 7

### the M



#### The M Penthouse Promo

1+S #20-39 (657sqft)

From \$1,574,600 - \$2397psf

**Savings up to \$41K**

2br #20-03 (732sqft)

From \$1,723,700 - \$2355psf

**Savings up to \$60k**

2+S #20-43 (861sqft)

From \$2,142,990 - \$2489psf

**Savings up to \$86K**

1 + Study

From \$1.483m

2 Bedroom

From \$1.691m

2 + Study

From \$2.127m

For selected stacks & limited Period Only.

## DISTRICT 9

### HAUS ON HANDY



#### VALID FOR LAST 3 UNITS

**1BR+S (stacks 7 & 21 only)**

**Less \$100K &**

**Less 2 Yrs Maintenance Fee**

**2 BR (stacks 17 & 19 only)**

**Less \$110K &**

**Less 2 Yrs Maintenance Fee**

**2 Years FOC Maintenance**

**For All Types**

**Limited Units**

### THE IVERIA



#### BUYER INCENTIVES: EXTRA

**\$100,000 + \$50,000**

Ox-Picious Cash For Selected Unit Booked

Ox-Picious Cash Payout At 30% Construction Stage

Promo Only Applies to 2th - 4th Floor of Stack 2 & 3



**BEN HE 何益龍**  
CEA REG NO.: R0486481

**8666 3339**  
Singapore Accredited Mortgage Planner (SAMP™)

Limited To Next 5 Units Or Till End June 2021



# STARBUY PROJECTS

**Huttons**  
The Agency of Choice

## DISTRICT 9



**3 Bedroom**  
Saving \$581K

**4 Bedroom**  
Saving \$768K

(Extra **Special** % - Call Our Agent For More Info)

**BEN HE 何益龍**  
CEA REG NO.: R0486481  
**8666 3339**  
Singapore Accredited Mortgage Planner (SAMP™)

## DISTRICT 10

**MOOI**  
RESIDENCES



### ADDITIONAL DISCOUNT

- 2BR 2 Bath - up to \$154,573
- 3BR - up to \$219,994
- 3BR (PH) - up to \$248,520
- 3+S (PH) - up to \$303,099
- 4BR (PH) - up to \$328,889

For Limited Period only.

*The*  
**HYDE**



- 1 & 2 Bedroom**  
Saving up to \$250,000
- 2+ Guest, 3 & 4 Bedroom**  
Saving up to \$100,000

For Selected Units Only

For Limited Period only.

JUNIPER  
HILL



- 2BR #02-02 (592 sqft)**  
Was \$1,680,000 / Now \$1,418,000  
\$2,395 PSF  
**Saving \$262,000**
  - 2BR Prem #02-09 (700 sqft)**  
Was \$2,090,000 / Now \$1,868,000  
\$2,669 PSF  
**Saving \$222,000**
  - 3BR #03-01 (915 sqft)**  
Was \$2,550,000 / Now \$2,228,000  
\$2,435 PSF  
**Saving \$322,000**
  - 3BR+S #02-11 (1109 sqft)**  
Was \$3,150,000 / Now \$2,929,000  
\$2,641 PSF  
**Saving \$221,000**
  - 4 BR #12-01 (1184 sqft)** Now \$5,141,000
  - 4 BR+S #12-03 (1970 sqft)** Now \$5,673,000
  - 5 BR #12-06 (2217 sqft)** Now \$6,491,000
- 3 years Maintenance Fee Absorption worth up to \$26K for the Non Promo Units Only
- 2 BR/2BR Prem/3 BR**  
**\$22,000**
  - 3 BR +Study**  
**\$26,000**

Not applicable to All Promo units / For Limited Period only



## DISTRICT 10

## DISTRICT 11

### LEEDON GREEN



#### Phase 2 Special Discount

- 1BR - \$28,000
- 2BR - \$38,000
- 3BR - \$68,000
- 4BR - \$108,000

For Limited Period only.

### FOURTH AVENUE RESIDENCES



- 1 BR Was \$1,342,000  
Now @ \$1,148,000  
Only \$2,221 PSF  
**Saving \$174,000**
- 2 BR Was \$1,525,000  
Now @ \$1,358,000  
Only \$2,102 PSF  
**Saving \$167,000**
- 2 BR P Was \$1,782,000  
Now @ \$1,598,000  
Only \$2,251 PSF  
**Saving \$184,000**
- 3 BR Was \$2,318,000  
Now @ \$2,078,000  
Only \$2,194 PSF  
**Saving \$240,000**
- 3 BR+S Was \$2,619,000  
Now @ \$2,348,000  
Only \$2,183 PSF  
**Saving \$271,000**

Promo End Till 31st May 2021

### NOUVEL 18



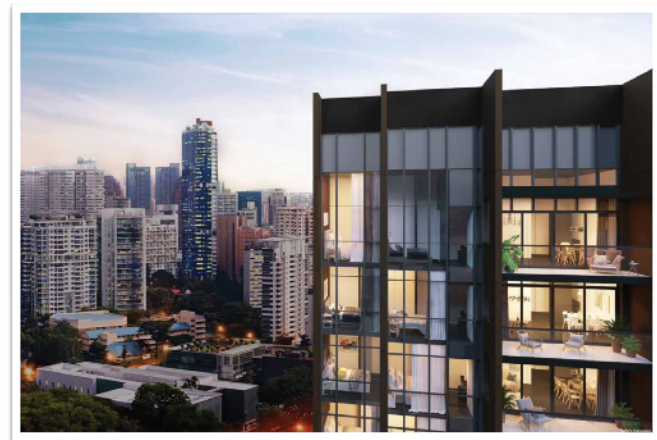
**3% DISCOUNT**

**Limited Units**



**BEN HE 何益龍**  
CEA REG NO. : R0486481  
**8666 3339**  
Singapore Accredited Mortgage Planner (SAMP™)

### pullman RESIDENCES NEWTON



**UP TO 2.5% DISCOUNT**

- 1 Bedroom #12-12 (463sf)**  
Was \$1,406,000 - Now \$1,370,000 **Savings - \$36,000**
- 2 Bedroom #04-04 (667sf)**  
Was \$1,867,000 - Now \$1,816,000 **Savings - \$51,000**
- 2 Bedroom #04-10 (667sf)**  
Was \$1,901,000 - Now \$1,872,000 **Savings - \$29,000**
- 3 Bedroom #07-02 (1163sf)**  
Was \$3,320,000 - Now \$3,198,000 **Savings - \$122,000**
- 3 Bedroom #08-02 (1163sf)**  
Was \$3,336,000 - Now \$3,213,000 **Savings - \$123,000**
- 3 + Study #05-08 (1281sf)**  
Was \$3,594,000 - Now \$3,462,000 **Savings - \$132,000**
- 3 + Study #06-08 (1281sf)**  
Was \$3,617,000 - Now \$3,485,000 **Savings - \$132,000**

For Limited Period only.



## DISTRICT 11

**35**  
GILSTEAD



### ADDITIONAL DISCOUNT

1 BR - up to **\$69,100**  
 1+S - up to **\$96,300**  
 2BR - up to **\$75,400**



**BEN HE 何益龍**  
 CEA REG NO. : R0486481  
**8666 3339**  
 Singapore Accredited Mortgage Planner (SAMP™)

## DISTRICT 12

**JUI**  
RESIDENCES



### ADDITIONAL \$40,888 DISCOUNT

### LAST 4 UNITS OF 3 BEDROOM

FROM \$1,726,912  
 After \$40,888 Discount  
 For Limited Period only.

## VERTICUS



### UP TO \$88,888 SAVINGS

#### 2 Bedroom (678sqft)

#07-08 - \$1,294,000  
 #08-08 - \$1,307,000

#### 2 + Study (775sqft)

#06-01 - \$1,461,000  
 #07-01 - \$1,468,000

#### 3 Bedroom (936sqft)

#06-05 - \$1,738,000

Promo Valid Till End May 2021

## DISTRICT 13

## MYRA



### SPECIAL \$80,000 DISCOUNT

1 BR – Stack 01  
 From \$1,004,800

### SPECIAL \$70,000 DISCOUNT

2 BR – Stack 07  
 From \$1,436,800

For Limited Period Only



## DISTRICT 13

### WOODLEIGH RESIDENCES



#### SELECTED UNITS

- 2BR \$40K DISCOUNT
- 3BR \$150K DISCOUNT
- 4BR \$260K DISCOUNT

For Limited Period only.

**BEN HE 何益龍**  
CEA REG NO. : R0486481  
**8666 3339**  
Singapore Accredited Mortgage Planner (SAMP™)

## DISTRICT 14

### THE ANTARES



#### Special Promotion

- 2 Bedroom  
**Up To \$20K**
- 3 Bedroom  
**Up To \$30K**
- 4 Bedroom  
**Up To \$45K**

For Limited Period only.

## DISTRICT 14

### TEdge



#### RESILIENCE CASH PACKAGE

**\$100K Cash Promo**

For Selected Star Buy Units

Terms & Conditions apply while promo last.

## DISTRICT 15

### NYON



#### 2 Bedroom

#09-02 Was \$1,924,000  
NOW \$1,850,000

**\$74,000 Saving**

#05-06 Was \$2,045,000  
NOW \$1,910,000

**\$135,000 Saving**

#### 3 Bedroom

#02-05 Was \$2,716,000  
NOW \$2,450,000

**\$266,000 Saving**

For Limited Period only.



## DISTRICT 15



**FLAT \$2238 PSF FOR 9 UNITS  
PROMO**

- For levels 8 & below

**3 Br From \$2.3m**

Promotion Ends  
End May Or  
Next 3 Units Sold.

## DISTRICT 17

### THE JOVELL



#### Extra Discount

Unit type

3BR Compact - **\$22,000**

4 Bedroom - **\$32,000**

For Limited Period only.

## DISTRICT 18

### TREASURE TAMPINES



#### Special Promotion

2 Bedroom  
**Up To \$30K**

3 Bedroom  
**Up To \$70K**

4 Bedroom  
**Up To \$80K**

4 Premium  
**Up To \$90K**

For Limited Period only.

## DISTRICT 19

### THE Gazania



1BR - **\$40K**  
2BR - **\$50K**  
3BR - **\$70K**  
4BR - **\$90K**

PHse / 4BR Mezzanine - **\$120K**

For Limited Period only.

(Extra **Special** % -  
Call Our Agent For  
More Info)



**BEN HE 何益龍**  
CEA REG NO. : R0486481  
**8666 3339**  
Singapore Accredited Mortgage Planner (SAMP™)



## DISTRICT 19

## DISTRICT 20



### AFFINITY

AT SERANGOON



### RIVERFRONT

RESIDENCES

### SENGKANG GRAND

RESIDENCES



### L A T T I C E

ONE



**5% ABSD DISCOUNT +  
ADDITIONAL UP TO \$82K  
DISCOUNT**

4 Bedroom Strata House  
2110sqft

**Extra Discount**

**Up to 3% Discount  
For Selected Units**

**\$82K Discount**

3Br Deluxe Stack 01

**Special \$100K Discount  
For The Next 3 Units Only**

**3BR - \$30K**

**4BR - \$40K**

**\$40K Discount**

3Br Deluxe Stack 53

House 87 to 97

From \$2,395,940

Applicable To Selected Units

For Limited Period only.

**\$25K Discount**

3Br Compact Stack 06

For Limited Period only.

For Limited Period only.

For Limited Period only.



**BEN HE 何益龍**  
CEA REG NO. : R0486481  
**8666 3339**  
Singapore Accredited Mortgage Planner (SAMP™)



## DISTRICT 23

### PHOENIX RESIDENCES



#### SPECIAL 3% DISCOUNT

- 1 + Study  
From \$848,750
- 2 Bedroom (1 Bath)  
From \$905,340
- 2 Bedroom (2 Bath)  
From \$1,064,980
- 2 + Study  
From \$1,284,240
- 3 Bedroom  
From \$1,478,240
- 3 + Study  
From \$1,920,810

### MIDWOOD



#### SPECIAL DISCOUNT

- 1 Bedroom Save Up To \$48K  
From \$808,000
- 1 + Study Save Up To \$61K  
From \$914,000
- 2 Bedroom Save Up To \$153K  
From \$1,003,000
- 2 Premium Save Up To \$149K  
From \$1,104,000
- 2 + Study Save Up To \$177K  
From \$1,203,000
- 3 Bedroom Save Up To \$105k  
From \$1,371,000
- 3 Premium Save Up To \$157K  
From \$1,533,000
- 4 Bedroom Save Up To \$85K  
From \$1,928,000

For Limited Period only.

**Disclaimer:** While Huttons Asia has endeavoured to ensure that the information and materials contained herein are accurate and up to date as at 10/05/2021. Huttons Asia is not responsible for any errors or omissions, or for the results obtained from their use or the reliance placed on them. All information is provided "as is", with no guarantee of completeness, and accuracy. In no event will Huttons Asia and/or salespersons thereof be liable in contract or in tort, to any party for any decision made or action taken in reliance on the information in this presentation or document or for any direct, indirect, consequential, special or similar damages.

#### CONTACT ME FOR MORE INFORMATION



**BEN HE 何益龍**  
CEA REG NO. : R0486481  
**8666 3339**  
Singapore Accredited Mortgage Planner (SAMP™)

Leading Project Marketer | Follow us on social media     