

STIRLING
RESIDENCES 尚景苑

BETWEEN THE SKY ABOVE
AND THE EARTH BELOW,
LUXURY RESIDES.

A WORLD BEYOND COMPARE

Tucked in quaint Stirling Road and a 3-minute short stroll from Queenstown MRT, surround yourself with quiet tranquility yet just be within minutes away from all the excitement of the city. Comprised of three astounding towers with beautiful sky terraces and roof gardens, Stirling Residences lets you immerse in an affluence of remarkable panoramic views, while you bask in a selection of enjoyable amenities present among the various neighbourhoods nearby for recreation and business.



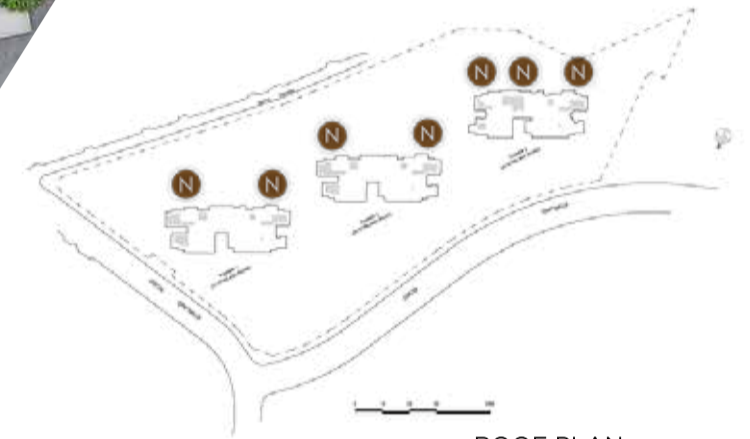
CURATED SPACES OF
THOUGHTFULNESS WITH

80

LUXURIOUS FACILITIES



SHELTERED WALKWAY TO BUS STOP
3-MIN SHORT STROLL FROM MRT STATION



ROOF PLAN
21 STIRLING ROAD - ROOF LEVEL
23 STIRLING ROAD - ROOF LEVEL
25 STIRLING ROAD - ROOF LEVEL

LEGEND

- | | |
|--------------------------|---------------------------|
| A) RAIN GARDENS | H) TRANSFORMER ROOM (UB1) |
| B) VEGETATED SWALE | I) BIN CENTRE (UB1) |
| C) BIO RETENTION SWALE | J) SUBSTATION (UB1) |
| D) CHILDCARE CENTRE (B2) | K) GENSET |
| E) GUARD HOUSE | L) M&E LOUVERS |
| F) TRANSFORMER ROOM | M) SIDE GATE |
| G) SWITCH ROOM | N) WATER TANKS |

LEGEND

FERN FOREST

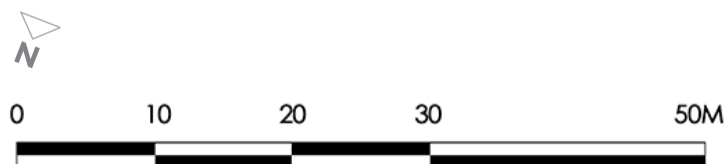
- 1) STARGAZING LAWN
- 2) AROMA GARDEN
- 3) FERN GROVE
- 4) TREKKING HILL
- 5) READING DECK
- 6) BBQ PAVILION
- 7) FLORA TERRACE
- 8) PUTTING GREEN
- 9) FITNESS PAVILION
- 10) FOREST TRAIL
- 11) BUBBLING STREAM
- 12) YOGA PAVILION
- 13) YOGA LAWN
- 14) TODDLER'S PLAYGROUND
- 15) FOREST FITNESS LAWN
- 16) FOOT REFLEXOLOGY
- 17) MEDITATION DECK
- 18) FOREST POD
- 19) MIST GARDEN
- 20) ADVENTURE PLAYGROUND
- 21) LOTUS POND
- 22) LILY POND
- 23) FOREST MEDITATION PAVILION
- 24) HERB GARDEN
- 25) TAI CHI LAWN
- 26) GARDENING DECK
- 27) FOREST PATH
- 28) 50M LAP POOL
- 29) CHILDCARE CENTRE PLAYGROUND
EXCLUSIVELY FOR CHILDCARE CENTRE (B2)

TROPICAL FOREST

- 30) KID'S POOL
- 31) KID'S WATER PLAY
- 32) KID'S CLUB
- 33) SPICE GARDEN
- 34) KOI POND
- 35) DAYBED GROVE
- 36) WAITING LOUNGE
- 37) GRAND DROP OFF
- 38) MULTI-PURPOSE ROOM
- 39) LIBRARY
- 40) POOL DECK
- 41) BUBBLING CORNER
- 42) FUNCTION ROOM
- 43) STEAM ROOM
- 44) SPILL OUT DECK
- 45) GYM
- 46) WATER LOUNGES
- 47) TENNIS COURT (B1)
- 48) HANGING PAVILION
- 49) REFLECTIVE STREAM
- 50) WATERFALL PAVILION
- 51) HAMMOCK LAWN
- 52) TEA COURTYARD LAWN
- 53) TROPICAL PAVILION
- 54) CASCADING STREAM
- 55) TROPICAL POD
- 56) MEDITATION PARK

RAIN FOREST

- 57) WATER FEATURE WALL
- 58) CANOPY WALK
- 59) MASSAGE PAVILION
- 60) GREEN LOUNGER
- 61) SPA SEAT
- 62) AQUA GYM
- 63) SPA DECK
- 64) BUBBLE WATER PUSH
- 65) AQUA FOOT REFLEXOLOGY
- 66) SUN DECK PAVILION
- 67) LANTERN POD
- 68) HILLSIDE GREENERY
- 69) RAINFOREST TRAIL
- 70) YELLOW FLAME POD
- 71) REFLECTION LAWN
- 72) GRILL PAVILION
- 73) TEPPANYAKI GRILL PAVILION
- 74) SPA CABANA
- 75) OUTDOOR MASSAGE
- 76) CABANA DECK
- 77) CABANA CLUB
- 78) 30M POOL
- 79) POOL PAVILION
- 80) SKY/ROOF TERRACES
21 STIRLING ROAD - 3RD, 11TH, 17TH, 23RD, 29TH, 35TH STOREY
23 STIRLING ROAD - 3RD, 11TH, 17TH, 23RD, 29TH, 35TH STOREY
25 STIRLING ROAD - 3RD, 9TH, 15TH, 21ST, 27TH, 33RD STOREY
21 STIRLING ROAD - 40TH STOREY
23 STIRLING ROAD - 40TH STOREY



UB1 - UPPER BASEMENT 1 B1 - BASEMENT 1 B2 - BASEMENT 2

BUILDING A BETTER LIFE

Established in 1996, Logan Property Holdings Company Limited is a well-renowned integrated real estate developer and was listed on the Hong Kong Stock Exchange in 2013. The Group has received Grade-A qualifications in property development, general construction contracting and engineering design. Over the years, the Group has built a strong track record in building numerous residential properties in China and is well-known for its quality developments in the Guangdong-Hong Kong-Macau Greater Bay Area, having developed 250 million square feet of real estate.

To date, the Group is considered as one of the best property developers in China and has expanded its business to overseas markets such as Hong Kong and Singapore. Logan Property's mission of 'Building a Better Life' has led to the creation of over 110 residential projects and has improved the quality of over 600,000 lives. Logan Property has been awarded The Typical Projects of China Real Estate Developers Award from 2016-2018 for its work on the Great Bay Area of Guangdong-Hong Kong-Macau. The Group was ranked 29th in the China Top 100 Real Estate Developers, 3rd in Top 10 value investment stock and 295th in Fortune China's Top 500 Enterprises in 2017 - a testament to Logan Property's expertise and continuous commitment to excellence.

COMMITMENT TO EXCELLENCE

With over 30 years of sustainable development, Nanshan Group is known as a highly-diversified conglomerate with operations in aluminium, textile, finance, tourism, aviation, health & wellness, education and real estate. In 2017, the Group ranked 165th in the Top 500 Enterprises of China by virtue of its comprehensive strength. The Group has expanded its presence in various countries such as USA, Australia, Italy, Indonesia and Singapore.

Since 2013, the Group started its property developments and investments in Singapore, which include Park Regis Hotel at Merchant Road and Mercure Singapore Bugis at Middle Road, Tai Seng Centre for premium industrial offices and Harper Point for modern central kitchens, and Thomson Impressions, which was awarded the Best High End Condo Development in SEA Property Awards 2016.



Acesite Mansion, Shenzhen



Carat Complex, Shenzhen



Acesite Park, Shenzhen



Logan City, Shenzhen



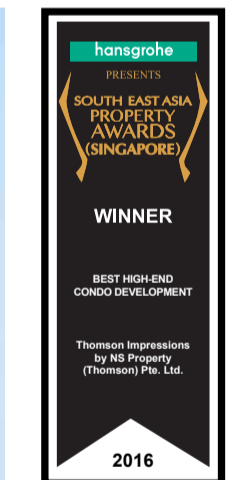
Thomson Impressions, Singapore



Tai Seng Centre, Singapore



Mercure Bugis, Singapore



Park Regis, Singapore

A MASTERPIECE
CREATED BY
TWO WORLD-CLASS
DEVELOPERS

A PARTNERSHIP THAT PROUDLY BRINGS YOU
THE POWER OF III

Welcome to Stirling Residences. A world where the Power of III comes alive - Position, Privilege and Passion.

A unique residence that commands all the best things in life and more for your exclusive pleasure.

POSITION

A position of prestige where the
world comes to you.

PRIVILEGE

For the privileged few who can now
call the sky their own.

PASSION

Curated spaces of thoughtfulness
designed to evoke the passion in you.



Artist's Impression

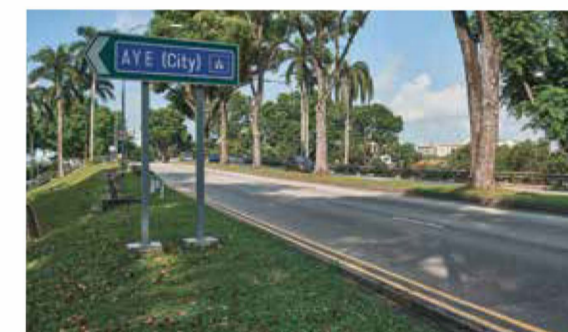
POSITION

A prestigious position, just a 3-minute short stroll from Queenstown MRT and close to a myriad of business hubs, entertainment & leisure amenities and prestigious schools.



CONNECTIVITY AT ITS FINEST

Stirling Residences offers you convenience like never before with the connectivity of the Queenstown MRT station, just a 3-minute short stroll away. It is also within close proximity to major expressways such as the Pan-Island Expressway (PIE) and the Ayer Rajah Expressway (AYE).



A HOST OF AMENITIES WITHIN REACH





PRIVILEGE

An address for the privileged few that offers spectacular views of the sea, city and greenery.

THE SEA



MOUNT FABER PARK

SENTOSA

LABRADOR NATURE RESERVE

SOUTHERN RIDGES

HORTPARK

KENT RIDGE PARK

Imagine breathtaking, panoramic views of the sea. Let the captivating waves of the sea soothe you. Become in awe at nature's invigorating presence.



Marina Bay Sands



Sentosa



Labrador Nature Reserve

THE CITY



Become among the select few to enjoy unblocked views of the dynamic city. Feel all the excitement and life that the colours of the city have to offer. Let these remarkable views take your breath away.



One-North



Central Business District



Mapletree Business City



Singapore Botanic Gardens



Henderson Waves Bridge



Mount Faber Park

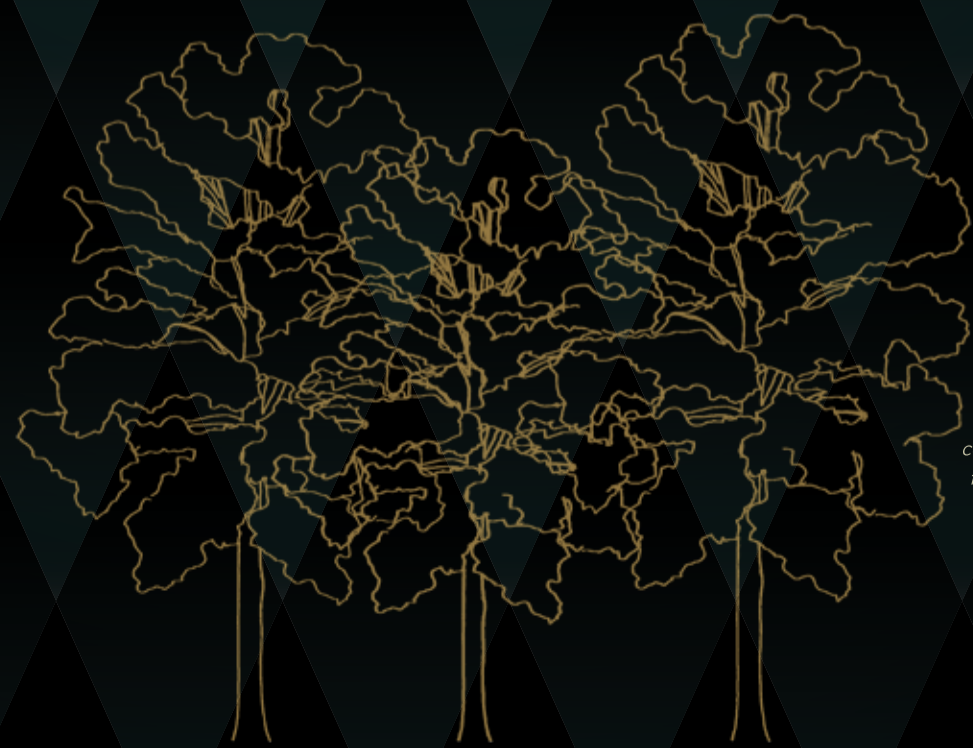
Wake up each day to stunning views of nature and refreshing greenery. Breathe in the fresh air and find calmness. Embrace the beauty of serenity.

THE GREENERY





Artist's Impression



*Revel in 16
conservation trees
found within the
development.*

PASSION

A residence with curated spaces of thoughtfulness such as 80 luxurious facilities on a sprawling terrain to evoke your passion.



THE FERN FOREST

A flourishing habitat where many relaxing possibilities await.



THE TROPICAL FOREST

A verdant paradise filled with many beautiful and exotic flora.



THE RAIN FOREST

A tranquil haven that lets you escape to a hidden world of many pleasures.



||| FORESTS OF INSPIRATION ||| RICH EXPERIENCES

Designed to let you interact with nature, find three different forests thriving with life, each created to give you a sense of wonder and joy every time.



Artist's Impression



Artist's Impression

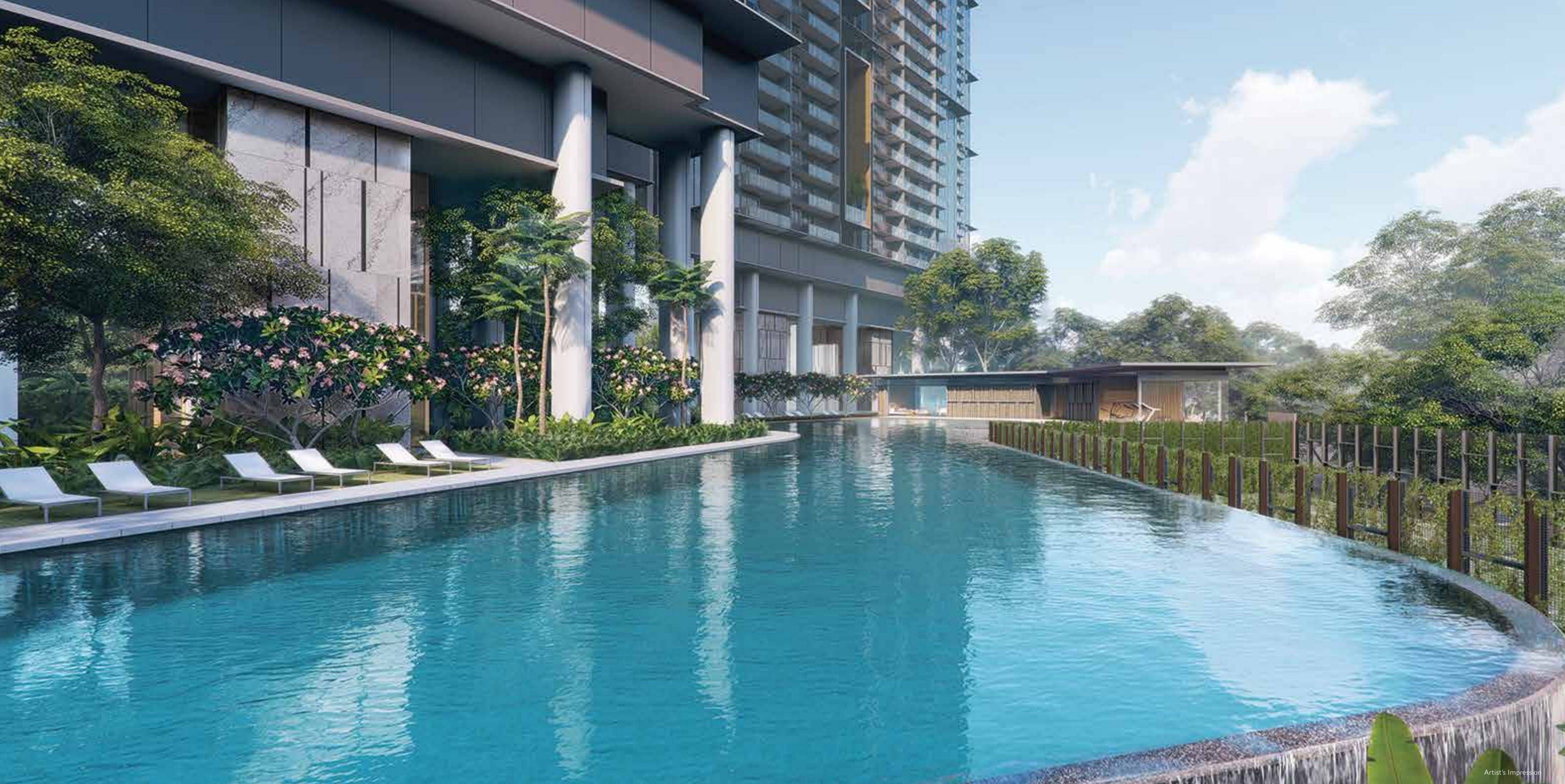
||| FORESTS OF INDULGENCE WITH FINE ATTENTION TO DETAIL

At Stirling Residences, find a home designed with your utmost enjoyment in mind. A lush sanctuary with 3 stunning forest themes, every forest offers you a pavilion where you can indulge in many possibilities.



Artist's Impression





Artist's Impression



RECHARGE AND PERFECTLY UNWIND

Discover impressive facilities that take care of your body to the fullest. Stay fit in the 50-metre lap pool and well-equipped gym. After a long day at work, loosen up completely as you take a dip in the bubbling corner. Practice those strokes as you play a round of golf with friends at the well-manicured putting green.



REJUVENATE THE MIND

At Stirling Residences, enter a world where you can truly relax. From the calming massage pavilion which puts your body at ease, to the meditation deck that lets you become one with nature and the spa deck that elevates the senses.



REVIVE WORTHWHILE MOMENTS

Dine with friends and family under the stars. Host fun BBQ gatherings and reunions by the pool. Or simply hangout and bond with your best friend over coffee at the wonderful outdoors. This is a home where memorable moments happen every day.



WHERE YOUR
CHILD'S IMAGINATION
COMES TO PLAY

Playtime has never been this fun. Create memorable moments at the adventure playground and let your child make new friends each day at the luxurious kid's club.





THE LUXURY OF SPACE

Perfection in a home was unattainable, until now. At Stirling Residences, indulge in a gracious space that lets you find joy in efficient layouts designed to bring quietude and restfulness.



Experience the epitome of stylish sophistication and modern comfort. Each luxurious apartment is adorned with imported fittings and appliances that set a new standard of luxury living.



A HOME THAT THINKS FOR YOU

Enjoy a home that brings together the best of Smart Home technology. Life is now more satisfying as you experience the convenience of being able to remotely monitor and control your home.



Smart Home Gateway

- Smart Home ready for expansion: Lighting Control, Smoke Detector, Motorised Curtain/Blind, Panic Button, Audio/Video Control, Smart Plug, WiFi Doorbell, Motion Sensor, IP Camera and more



IP Intercom

- 1 unit monitor provided
- Remotely grant access via Mobile App



Smart Digital Lockset

- 1 unit provided at the Main Door
- Built-in features: Card access, Pin access, Manual Key access & Remotely lock and unlock door via Mobile App



Smart Air Conditioner Control

- Living/Dining Area and Master Bedroom
- Built-in features: ON/OFF, Temperature Adjustment, Fan Speed and Time Scheduling for saving energy



Smart Community

Facility Booking

- Resident access to facilities

Lifestyle Services

- Instant booking on lifestyle services for the whole family
- Enjoy discounts and deals on a wide array of lifestyle privileges
- Convenient access to a curated list of home services

eInvites (Visitor Invitation/Registration)

- Pre-register your visitors via Mobile App
- Visitor registration via QR Code and lobby access using Pin Code

IMPECCABLE CONCIERGE SERVICE AT YOUR COMMAND



When it comes to attentive residential services, Stirling Residences pampers you completely. From dry cleaning services, housekeeping services, private chef services down to party and event management, our concierge is always on hand to assist you with your lifestyle needs.



Artist's Impression

DISCOVER THE POWER OF  TODAY



FOR ENQUIRIES, CALL 6100 0339
www.officiallaunch.com.sg/Stirling-Residences

JOINTLY DEVELOPED BY

LOGAN
龙光地产



南山集团
NANSHAN GROUP

Developer: LN Development (Stirling) Pte Ltd (Co. Reg. No. 201612530G) • Developer's License No.: C1247
• Tenure of Land: Leasehold (99 years lease commencing from 18 Aug 2017) • Lot No.: Lot 03894T & 03919A
MK01 at Stirling Road • Approved BP No. A1716-00003-2017-BP-01 dated 2 May 2018 • Date of Notice of Vacant
Possession under the S&P Agreement: No later than 30 Apr 2022 • Expected date of Legal Completion: No
later than 30 Apr 2025 or 3 years from date of Vacant Possession Notice, whichever is earlier • Encumbrances:
Mortgage in favour of United Overseas Bank Limited

